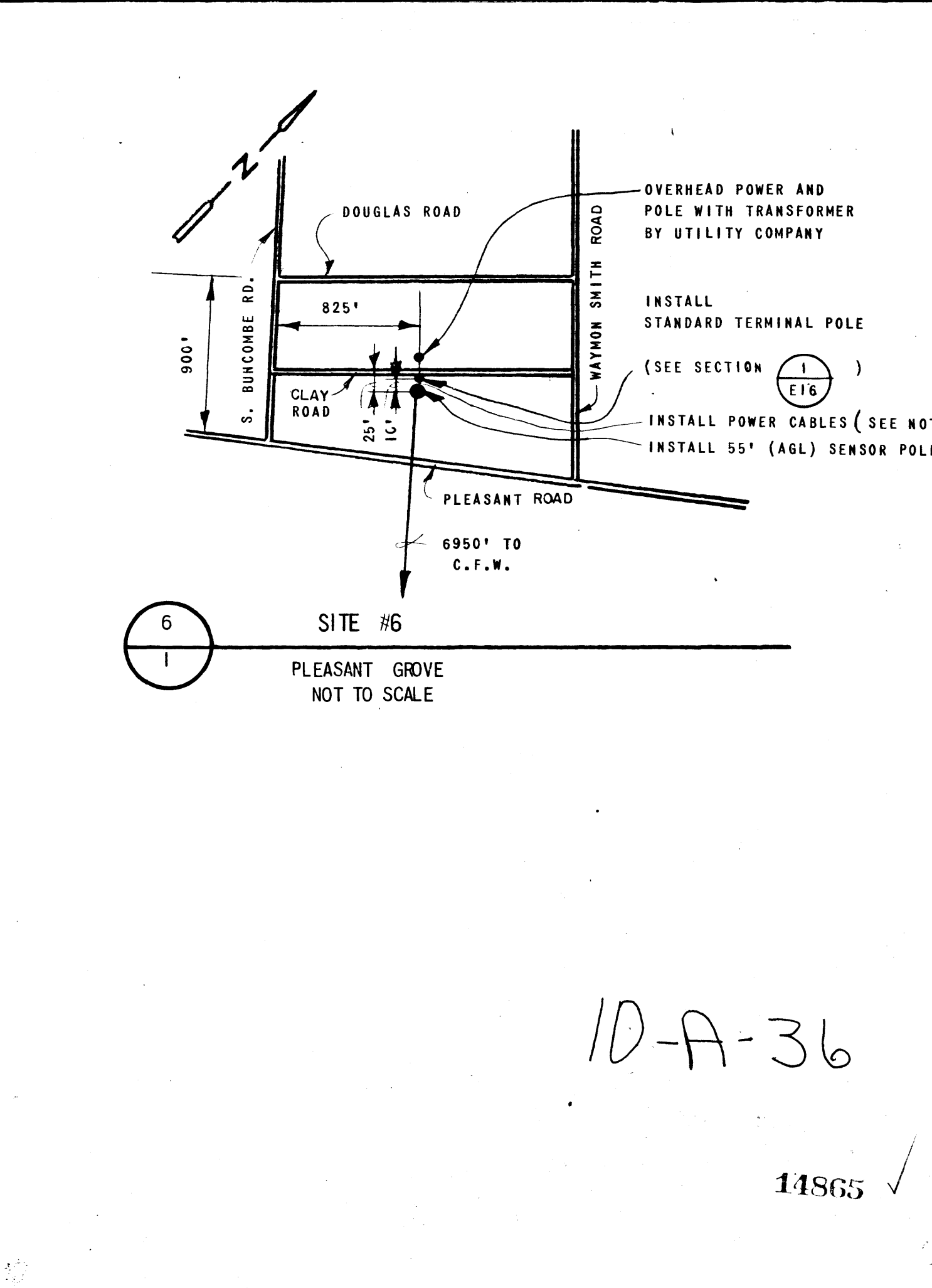
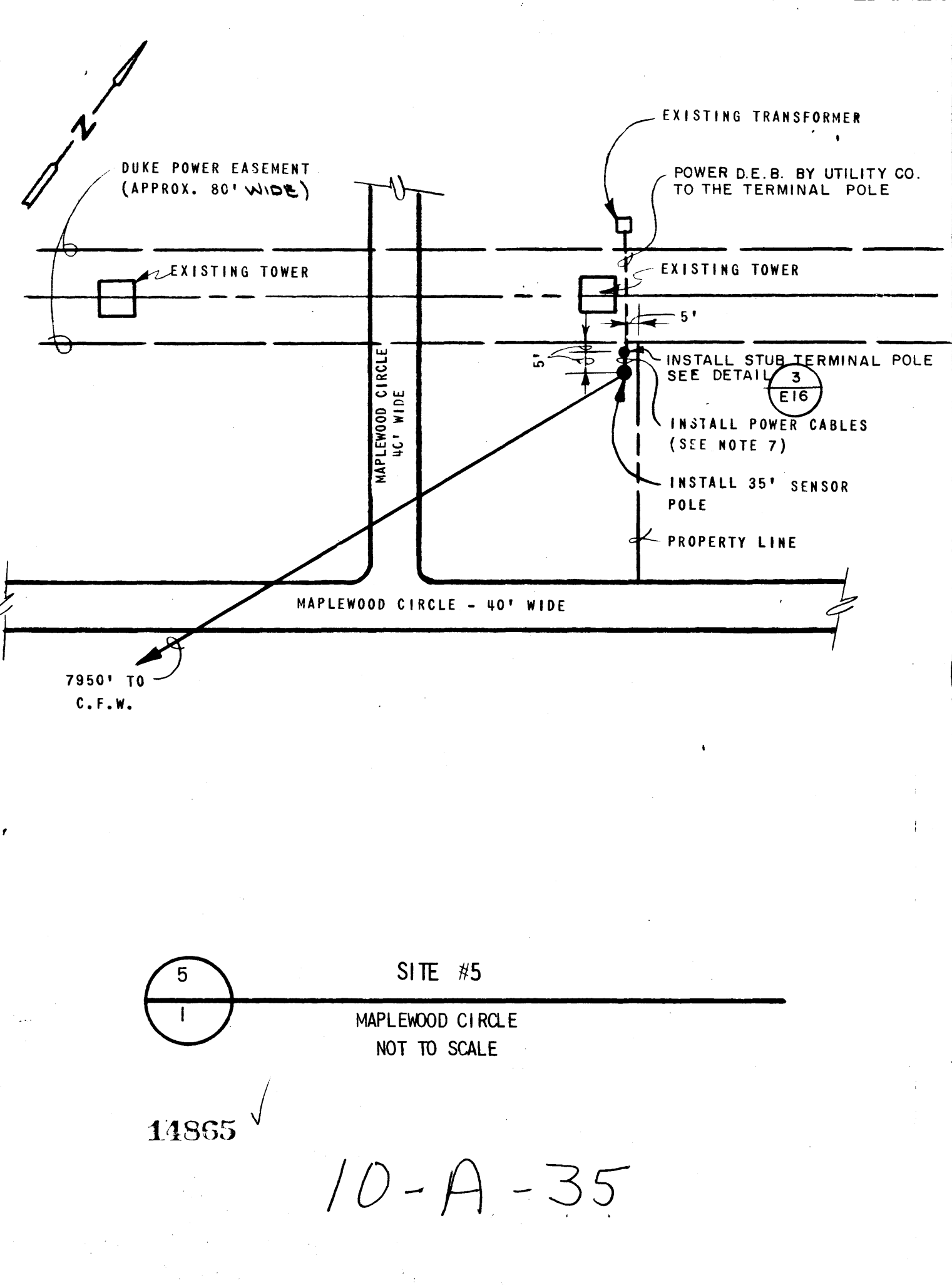
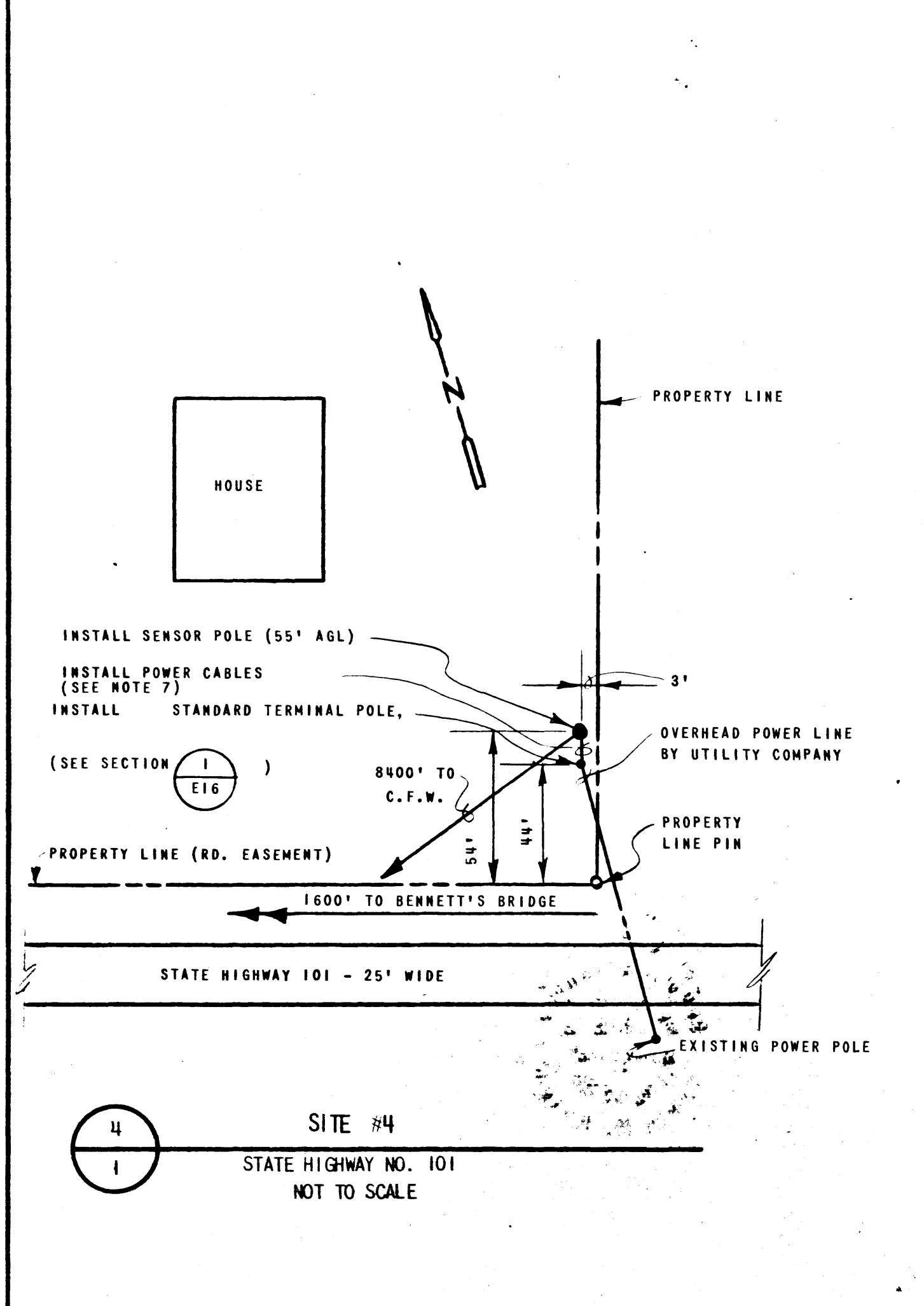
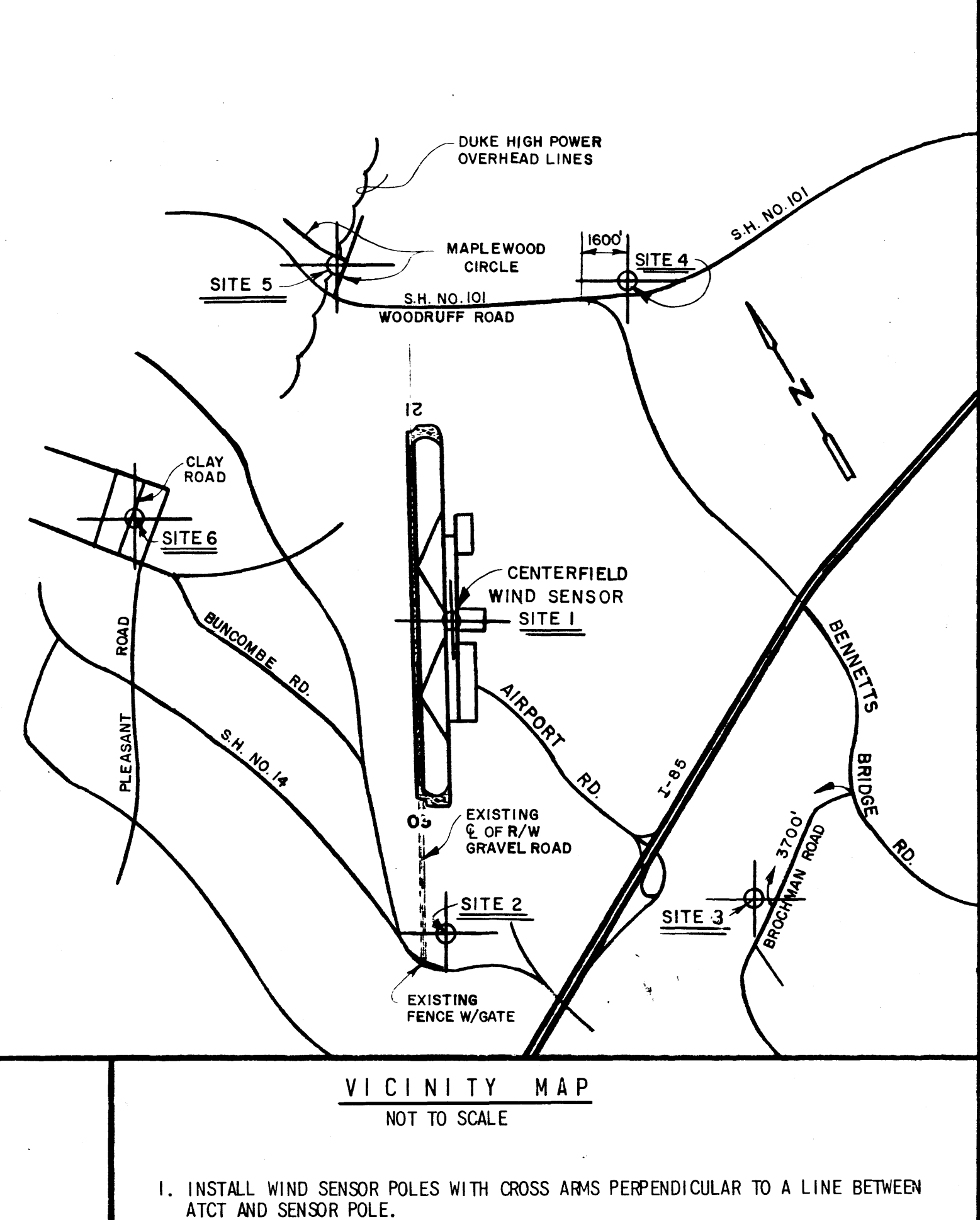
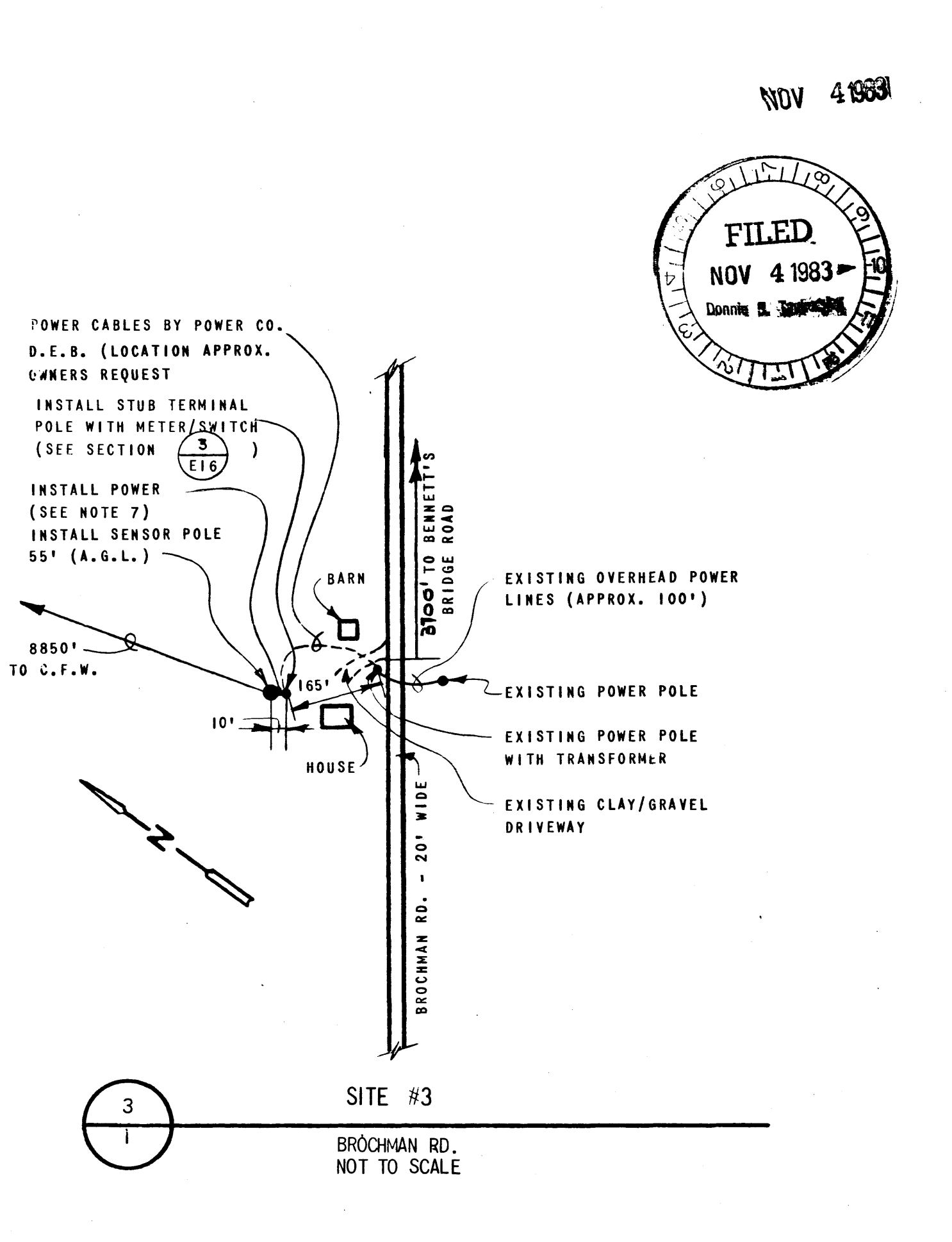
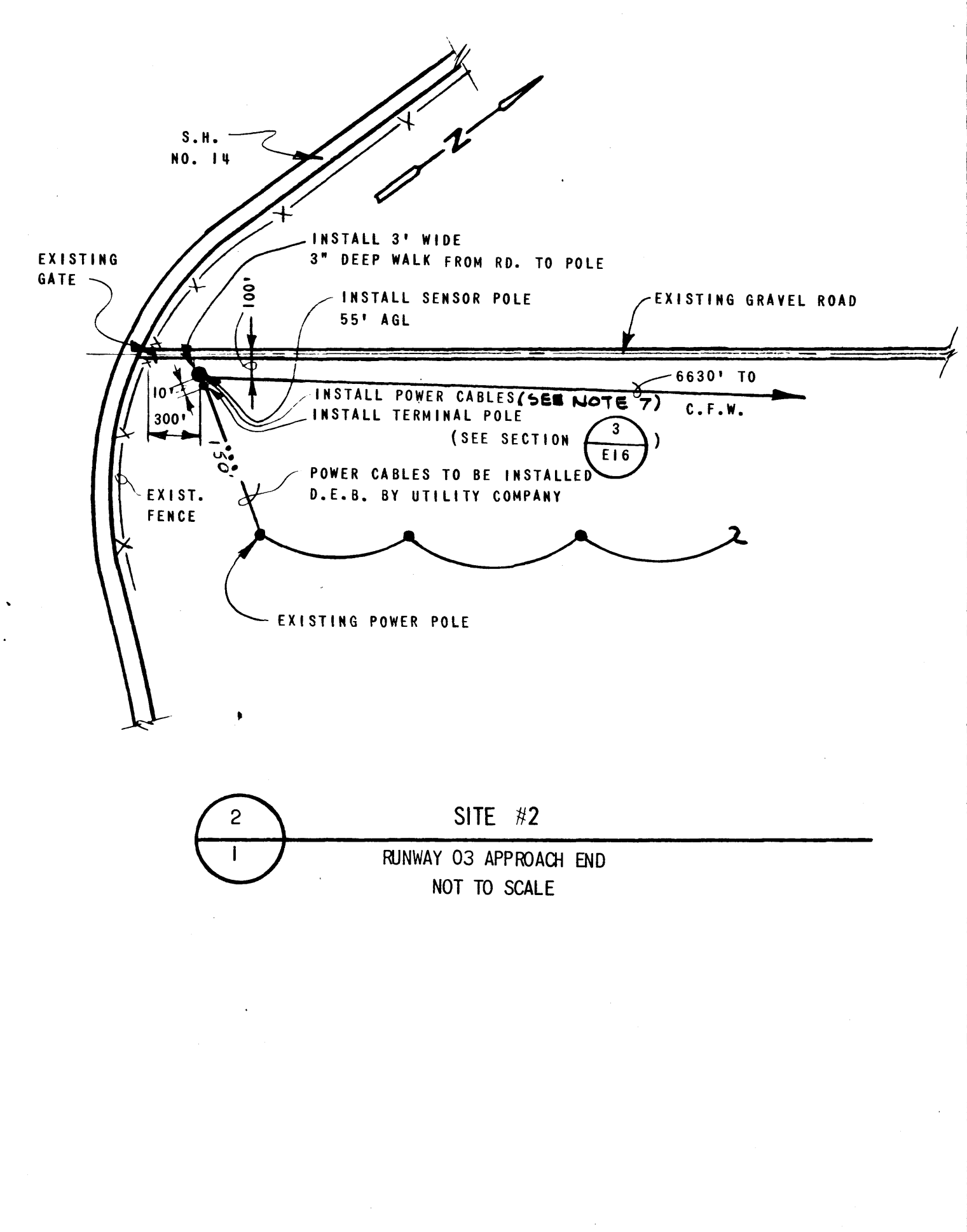
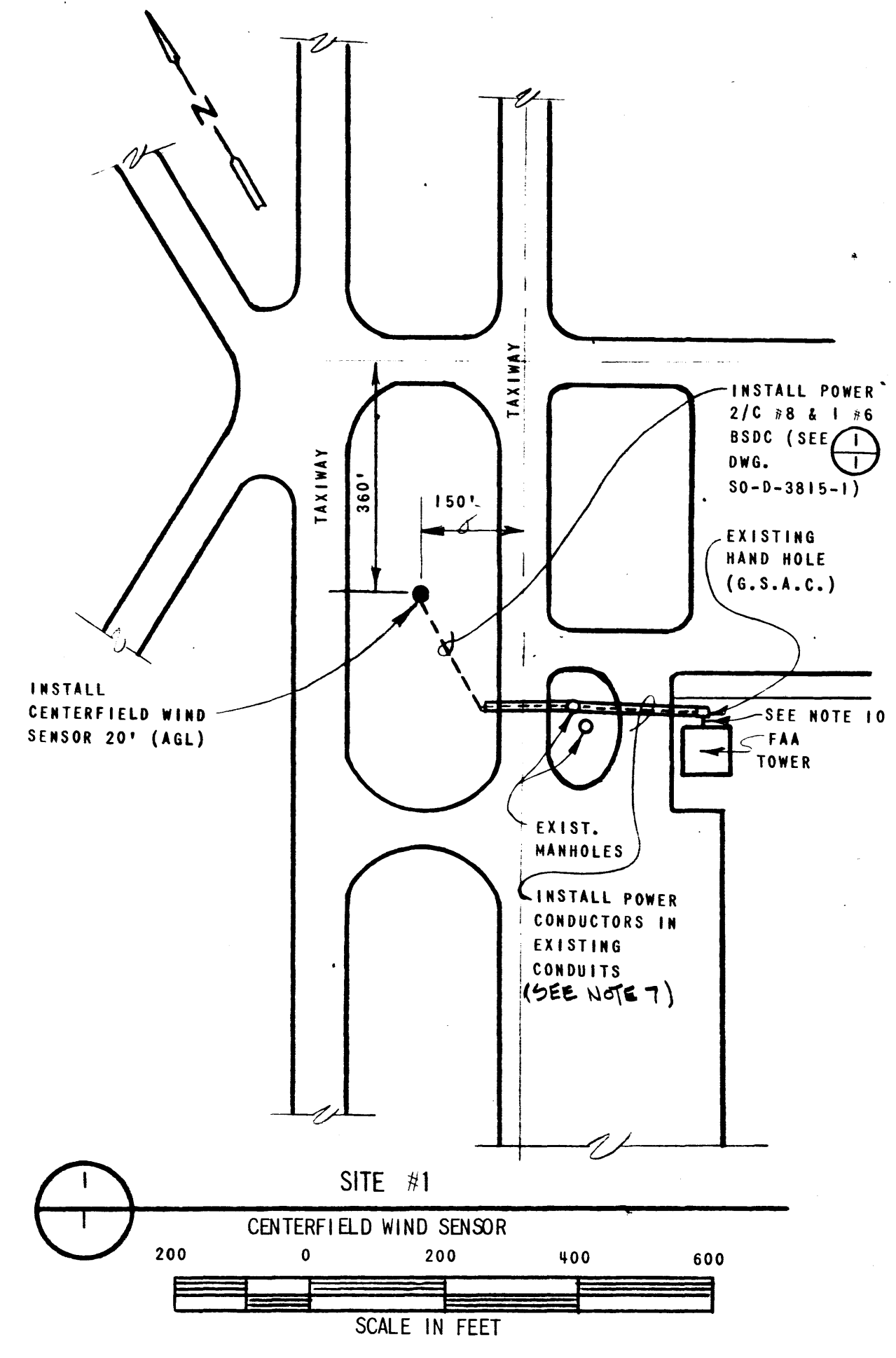


A 27590



- INSTALL WIND SENSOR POLES WITH CROSS ARMS PERPENDICULAR TO A LINE BETWEEN ATCT AND SENSOR POLE.
- RESIDENT ENGINEER WILL CONTACT AIRPORT AUTHORITY AND PUBLIC UTILITY COMPANIES TO DETERMINE LOCATIONS OF ANY BURIED CABLES IN LOCATIONS OF TRENCHING.
- MOUNT SAFETY CLIMBING DEVICE (GFM) ON ALL SENSOR POLES.
- NO GFM ENCLOSURES SHALL BE INSTALLED. DISREGARD DETAIL (2/3) DRAWING 50-D-3666-3.
- NOT USED
- INSTALL GRAVEL AROUND EACH SENSOR POLE AT SITES #2, 3, 4 & 6, 3" THICK, 6' DIA.
- SERVICE CONDUCTORS SHALL BE 2C #8 & 1 #6 BSDC IN 1" RIGID STEEL CONDUIT.
- SITES #4&6 TERM. POLE MUST BE GUYED IN ACCORDANCE WITH LOCAL UTILITY CO. REQUIREMENTS.
- AT SITES #3 & 6 INSTALL METER ON TERMINAL POLE SUCH THAT METER CAN BE READ FROM ROADWAY.
- EXTEND WIRING TO EXISTING SQ. "D" DIST. PANEL TFL. FURNISH AND INSTALL A IP - 20A. BREAKER AND CONNECT. INSTALLATION OF APPROX. 10' OF CONDUIT WILL BE REQUIRED TO CONNECT TWO EXISTING RACEWAYS. THIS WILL PROVIDE A RACEWAY TO EXTEND FROM THE ENTRANCE INTO THE BASEMENT TO PANEL TFL. COORDINATE WITH R.E. AND LOCAL SECTOR TECHNICIAN.

| REV./LTR.   | DATE                                     | DESCRIPTION                             | CHECKED        | APPROVED           |
|---|--|---|----------------|--------------------|
|   |  |   |                |                    |
| DEPARTMENT OF TRANSPORTATION<br>FEDERAL AVIATION ADMINISTRATION<br>SOUTHERN REGION ATLANTA, GEORGIA 30320 |  |   |                |                    |
| LLWAS<br>REMOTE AND CENTERFIELD SENSOR<br>SITE PLANS  |  |   |                |                    |
| Greer   |  | (Greenville-Spartanburg Airport)        |                | S.C.               |
| REVIEWED BY<br>483.4<br>483.31  | SUBMITTED BY<br>M. A. Montgomery 4/11/83 | APPROVED BY<br>N. L. Lawrence           |                |                    |
| DESIGNED BY<br>429  | DRAWN BY<br>CWP                          | ISSUED BY<br>AIRWAY FACILITIES DIVISION | DATE<br>5/5/83 | CREATED BY<br>LTR. |
| CHECKED BY<br>463   | DRAWING NO.<br>SO-D-3945-1               |   |                |                    |